

Your specialist of choice and reliable partner

EPTechnologies system is a complete product with an easy plug and play system. Our systems are fully tested before shipping from the factory and pass all quality tests on our test bench. We set the benchmark for future electric propulsion systems and, with 12 years of experience in electric propulsion and power boats, we are the market leader.

Many years of experience with large boats form the basis for the development of these systems. You are assured the highest quality and reliability. Both, the motors and the electrical controls, are very energy efficient.

We offer two models, saildrive and shaft drive, in three sizes. Other sizes are available on request. We are always available for you and will gladly discuss your ideas and wishes.

We are leading the way to a better and greener technology.



Join us – and turn your dreams into reality!



Powered by
EPTechnologies
Energy Power Technologies

GERMANY

EPTechnologies GmbH

Senefelder Ring 51
21465 Reinbek
Germany
Sales: +45 30 209 694
sales@epttechnologies.de
www.epttechnologies.de



DENMARK

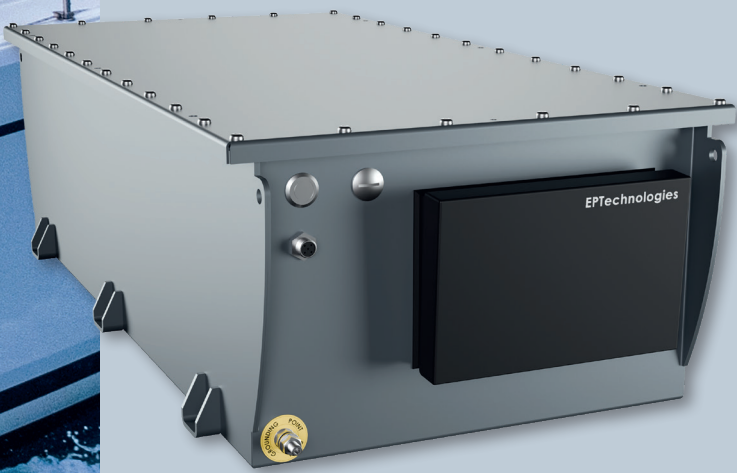
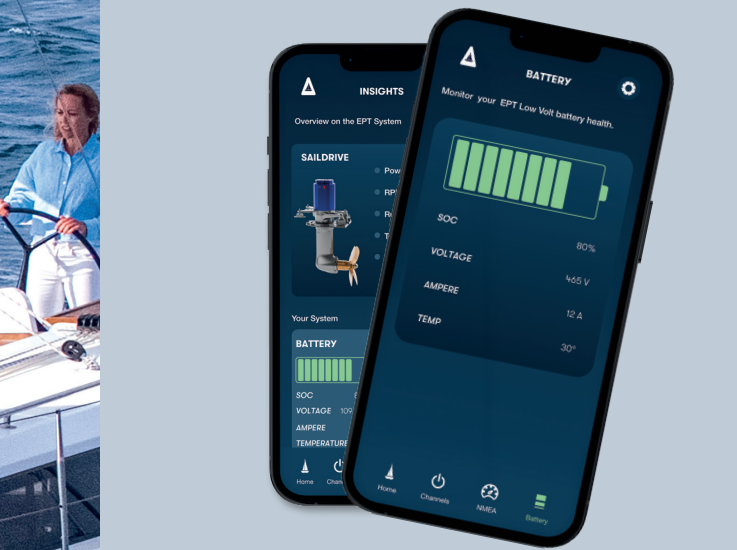
EPTechnologies ApS

Jyllandsgade 17
6400 Sønderborg
Denmark
Sales: +45 30 209 694
sales@epttechnologies.dk
www.epttechnologies.dk

The copyright for published objects created by the author himself remains solely with the author of the pages. Any duplication or use of such graphics, sound documents, video sequences and texts in other electronic or printed publications is not permitted without the express consent of the author.

© EPTechnologies GmbH 2025 5.25

ENERGY
POWER
TECHNOLOGIES



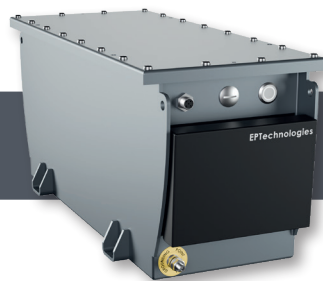
LV-LITHIUM
BATTERIES

www.epttechnologies.dk

EPTechnologies
Energy Power Technologies

EPTechnologies solid-state LFP batteries are available in 12 V, 24 V and 48 V, offer high energy density, exceptional safety, and reliable performance. Designed for versatile applications including marine propulsion, home power systems, and energy storage. These batteries are engineered for long-lasting, maintenance-free operation. These high-quality batteries are ideal for demanding environments where safety, efficiency, and durability are critical.

The main features are: enhanced thermal and chemical stability for superior safety, high cycle life, compact size with greater energy density, no risk of leakage or gas emission, fast and efficient charging, excellent performance across a wide temperature range, long shelf life with low self-discharge.



EPT 12 V SOLIDSTATE BATTERY

- Nominal 12.8 VDC
- Capacity 3.58 kWh
- Max continues charge 220 A / 0.8 C
- Max continues discharge 330 A / 1.2 C
- Cycle life 10000 80% DOD
- Stainless steel enclosure, 29 kg, IP65, 500 x 220 x 250 mm
- 2 years warranty, CE certified, UN 38.3
- Standards: IEC 62619, IEC 62620, ISO 23625:2021, ROHS

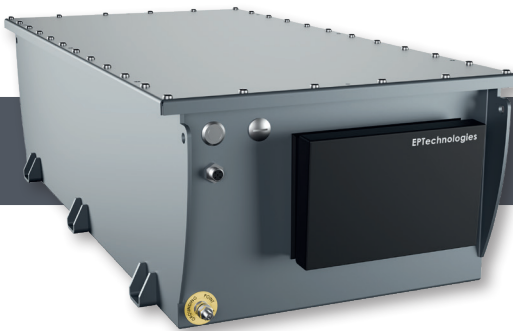
Order no.: 999-090025



EPT 24 V SOLIDSTATE BATTERY

- Nominal 25.6 VDC
- Capacity 7.1 kWh
- Max continues charge 220 A / 0.8 C
- Max continues discharge 330 A / 1.2 C
- Cycle life 10000 80% DOD
- Stainless steel enclosure, 54 kg, IP65, 810 x 220 x 250 mm
- 2 years warranty, CE certified, UN 38.3
- Standards: IEC 62619, IEC 62620, ISO 23625:2021, ROHS

Order no.: 999-090023



EPT 48 V SOLIDSTATE BATTERY

- Nominal 51.2 VDC
- Capacity 14.3 kWh
- Max continues charge 220 A / 0.8 C
- Max continues discharge 330 A / 1.2 C
- Cycle life 10000 80% DOD
- Stainless steel enclosure, 108 kg, IP65, 810 x 425 x 250 mm
- 2 years warranty, CE certified, UN 38.3
- Standards: IEC 62619, IEC 62620, ISO 23625:2021, ROHS

Order no.: 999-090024



The 12, 24 and 48 V SolidState LFP Battery Package is designed for maximum usability and connectivity, with the ability to connect in parallel for increased power output. It supports Wi-Fi, Bluetooth, and cloud integration for seamless monitoring and control.

The fuse is accessible externally, allowing easy replacement without opening the battery housing. The momentary switch enables users to connect or disconnect the battery manually or remotely via smartphone.

M10 cables can be connected directly to the terminals ensuring a maximum torque of 16 Nm when tightening connections to maintain secure and safe operation.



PACKCONTROL

PackControl is engineered to support 24 V and 48 V LiFePO₄ and SolidState battery systems, offering versatile solutions for a variety of marine energy applications. Capable of connecting and managing up to 14 batteries simultaneously, it is perfectly suited for large-scale energy storage needs on marine vessels, ensuring streamlined and centralized oversight of the entire battery network.

The system provides comprehensive performance monitoring, allowing you to track detailed metrics for each individual battery while maintaining an overview of the whole setup. With intelligent load management, PackControl optimizes energy distribution and allows precise control of individual battery loads. Real-time alerts and notifications keep you informed about battery health, performance, and critical events, ensuring you stay updated and in control, even in the most demanding marine environments.

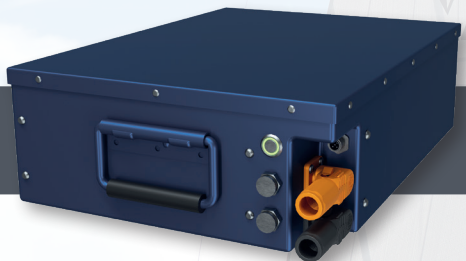
Order no.: 999-160001



EPT LITHIUM PACK 24 VDC NMC

- Nominal 25.9 VDC 155 Ah, capacity 4 kWh
- Max continues charge 70 A
- Max discharge 150 A, peak 180 A max 1 min
- Stainless steel enclosure, 26 kg, IP 54, 314 x 422 x 115 mm
- 3 years warranty, CE certified, UN 38.3
- CANBUS multiple batteries on same BUS, battery can also be used without CANBUS.

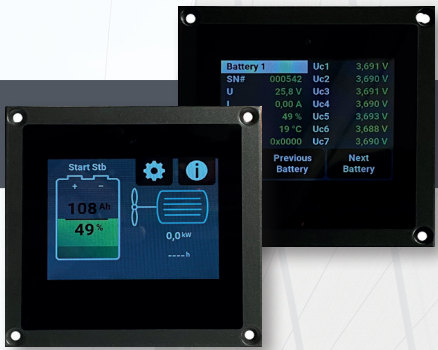
Order no.: 600-000034



EPT LITHIUM PACK 48 VDC NMC

- Nominal 48.1 VDC 105 Ah, capacity 5 kWh
- Max continues charge 50 A
- Max discharge 140 A, peak 160 A max 1 min
- Stainless steel enclosure, 26 kg, IP 54, 314 x 422 x 115 mm
- 3 years warranty, CE certified, UN 38.3
- CANBUS 250Kb/S multiple batteries on same BUS.

Order no.: 600-000035



DISPLAY/NMEA2000

- LBM:** 3,5" touch screen, max. 16 batteries parallel, 16 x 2 serial
- PSL:** 5" touch screen, max 24 batteries parallel, 24 x 2 serial
- Comes with CBO interface (set).
- CAN to NMEA2000** converter incl. Raymarine Axion 7" & 9" Software
- CAN to NMEA 2000** converter for boat control

Order No.: 400-000019

Order No.: 400-000021

Order No.: 500-000068

Order No.: 500-000067