

ENERGY  
POWER  
TECHNOLOGIES

**F FENIX**



SAIL &  
SHAFT DRIVES

[www.eptechnologies.dk](http://www.eptechnologies.dk)

**EPT**Technologies  
Energy Power Technologies

# EPTechnologies Racing Saildrive

Efficient, compact and powerful

EPTechnologies Saildrive propulsion systems are engineered to elevate your sailing experience by delivering a perfect blend of performance, efficiency, and reliability.

The Racing leg features an innovative combination of oil and glycol heat exchangers, allowing it to function as a closed-loop cooling system. This means there's no need to bring seawater onboard, significantly enhancing safety, simplifying installation, and improving system reliability. Designed with hydrodynamics in mind, the leg minimizes drag while maximizing thrust, ensuring smoother, quieter operation on the water.

Racing Saildrive leg offers instant torque, zero emissions, minimal noise, and low maintenance making it ideal for both cruising and tight maneuvering in marinas. It is the perfect solution for modern sailboats, representing the cutting edge of electric drive technology.

## RACING SAILDRIVE 40

### Technical specification:

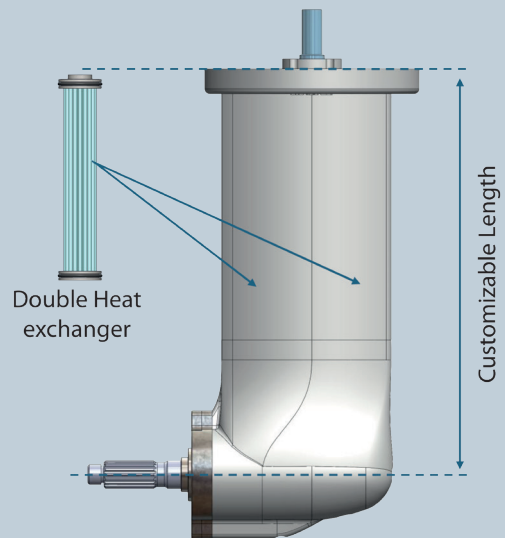
Standard length: 400 mm  
Long length: 500 mm  
Extra long length: 600 mm  
Suitable in a range: up to 40 kW  
Adaptable flanges are available on request.

### Upcoming version 2026

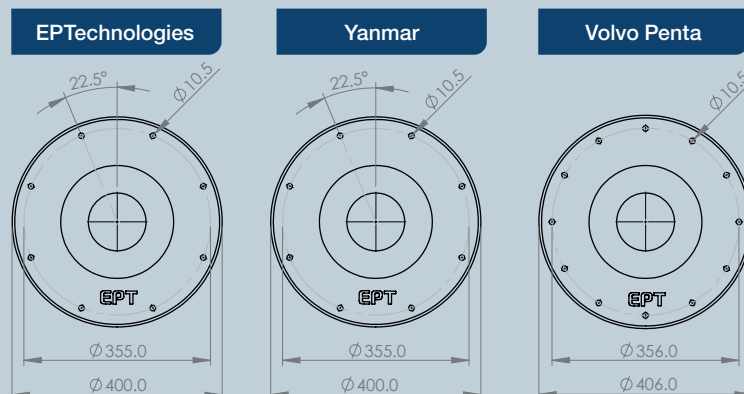
## RACING SAILDRIVE 80

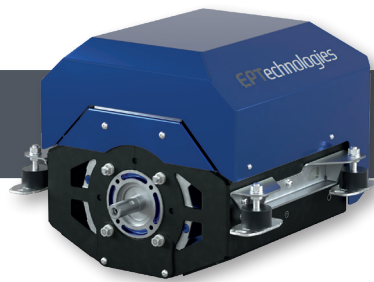
### Technical specifications

Standard length: 500 mm  
Long length: 600 mm  
Suitable in a range: up to 80 kW



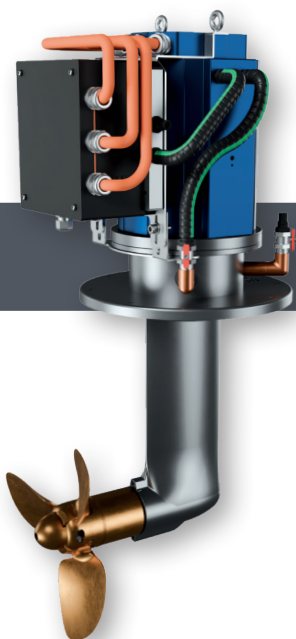
### Flange adaptable options:





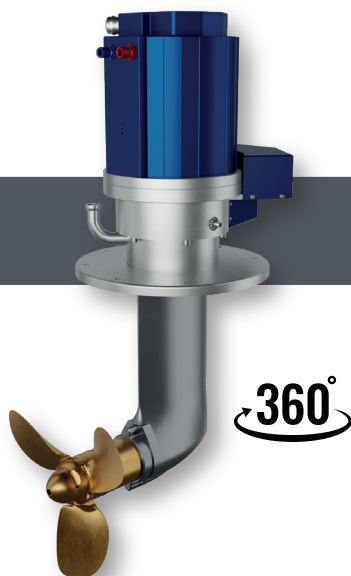
## SHAFT DRIVE

- Power: 7 to 38 kW
- RPM: 500 to 1800 Rpm
- Voltage: 48 to 100 VDC
- CE and EN 60034 type approval
- Glycol pump, sea water pump, heat exchanger and propulsion and regeneration controller integrated
- Plug and play system
- Capable of energy regeneration



## RACING SAILDRIVE

- Power: 7 to 37 kW
- RPM: 500 to 1800 Rpm
- Voltage: 48 and 100 VDC
- Plug-and- play solution
- Built in with EPT Racing Saildrive
- CE and EN 60034 type approval
- Adaptable flanges available on request
- Glycol cooling in Saildrive leg itself
- Cooling plate, control box is mounted
- No requirement of seawater intake into the boat
- No need of seawater filter and pump
- Capable of energy regeneration

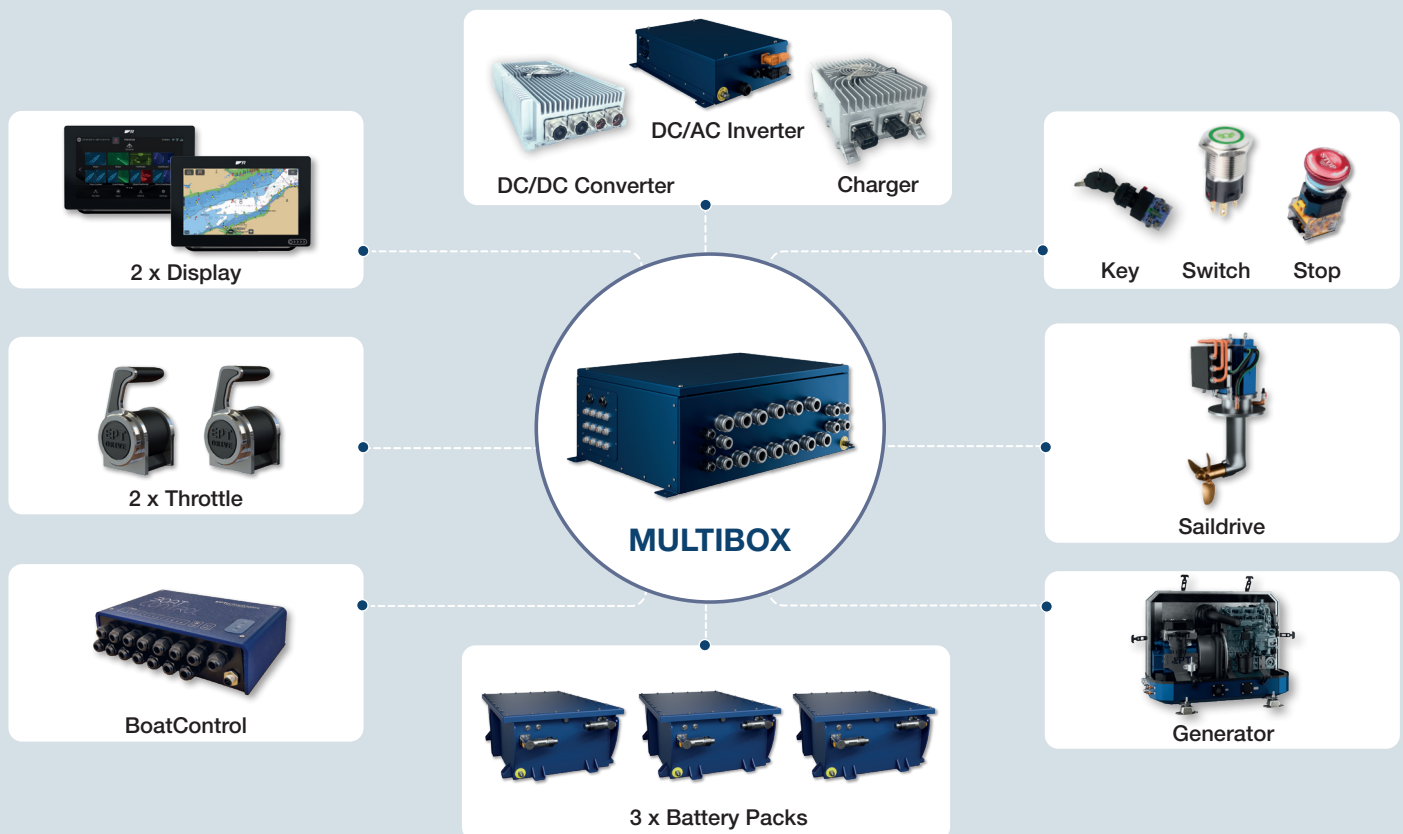


## TURNABLE SAILDRIVE

- Power: 7 to 37 kW
- RPM: 500 to 1800 Rpm
- Voltage: 48 and 100 VDC
- High torque 360 degree complete turnable in 5 sec
- EPT SD Racing leg mounted
- CE and EN 60034 type approval
- Adaptable flanges available on request
- Heat exchanger, pumps, filter, controller and PLC mounted

# Multibox system

Multibox is a compactible box designed for marine applications, offering flexible configurations to meet various requirements for propulsion, energy control, generation, monitoring and auxiliary systems.



## Input options:

2 propulsion units (2 x sail drive or 2 x shaft drive) OR:  
1 propulsion unit (sail drive or shaft drive) + 1 generator

## Battery system:

3 x 18.2 kWh NMC battery (Total 55 kWh capacity)  
Or 3x 28.6 kWh Solid state battery (Total 85.9 kWh capacity)

## Chargers:

3 x 3.3 kW charger

## Converter:

1 x DC/DC Converter: 100 VDC to 14 VDC or 24 VDC

## Inverter:

1 DC/AC inverter: 100 VDC to 230 VAC

## Power outputs:

Electric motor: Individual maximum output 40 kW  
Generator: Maximum output 20 kW

## Connection options:

2 throttle units  
2 display units  
Switches, emergency stops and push buttons

## Functionality:

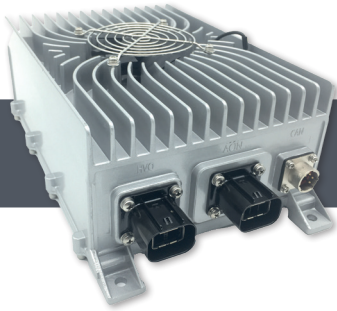
Suitable for both sailing boats and catamarans. For larger application up to two Multibox units can be installed. This configuration supports up to two propulsions and two generators and double the battery size (total 110 kWh NMC or 171 kWh SolidState)





## MULTIBOX

- Driver Voltage capable: 48 and 100 VDC
- Fuses for all individual devices, converters and PLC integrated
- Adaptable for Monohull and Multihull
- Require 1 Multibox for entire propulsion and regeneration
- CANBUS communication
- Easy and fast fixing solution
- CE certified



## CHARGER

- Max output power: 3.3 kW
- Input voltage range: 85 ~ 264 VAC
- Max input current: 16 @ 220 VAC
- Output voltage: 70 ~ 135 VDC
- Max output current: 35 A
- Freq. range: 47 ~ 63 Hz
- Cooling: Air-cooled
- IP grade: IP67
- CE certified



## DC/DC CONVERTER

- Output power: 1.5 kW and 2 kW available
- Input voltage range: 70 VDC ~130 VDC
- Max input current: 23A @  $V_{in} = 75$  VDC
- Output voltage: 14 VDC
- Output current: 10 A ~ 107 A
- Cooling: Air-cooled
- Protection grade: IP67
- CE certified



## DC/AC INVERTER

- Output power: 3 kW and 4 kW available
- Input voltage range: 70 VDC ~ 130 VDC
- Max input current: 43 A
- Output voltage: 230 VAC
- Output current: 13 A
- Cooling: Air-cooled / Water-cooled
- Protection grade: IP67
- CE certified, EN45545-2 approved



## EPT BOATCONTROL APP

- Option to connect 14 channels in parallel
- Global access and monitoring
- Intelligent automation and effortless control
- Compatible with Android, iOS and web.
- Insight into boat performance via real-time data
- Multi-device control for additional boxes



## DUCAN

### Advanced vessel monitoring and support system

Optimise your fleet management with our specialised monitoring and support system, specifically designed to meet the rigorous demands of the maritime industry. Gain comprehensive insights into your customer's vessels, enabling precise fault detection, system analysis and efficient troubleshooting—all without the need for boarding.

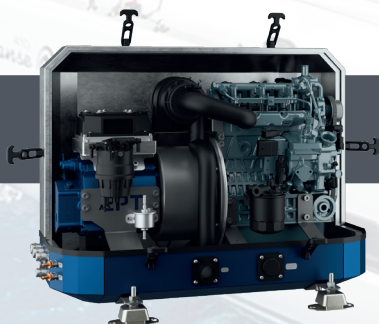


- **Maximise uptime** – Access complete vessel system data to reduce downtime and optimise performance
- **Automated data logging and trend analysis** – capture, log and analyse critical data to identify patterns and anticipate maintenance needs
- **Real-time error reporting and alarms** – receive instant alerts and notifications in the event of faults or malfunctions, enabling quick remote management of issues
- **Comprehensive vessel overview** – get a complete, actionable overview of each vessel's operational status, so you can proactively address potential issues

This service is provided for B2B customers only. Private customers may access this support on request

**Platform availability:** fully compatible with Windows, Android, and iOS.

Leverage our enhanced support to optimise your operations, protect your assets, and strengthen your client relationships.



## DC MINI GENERATOR

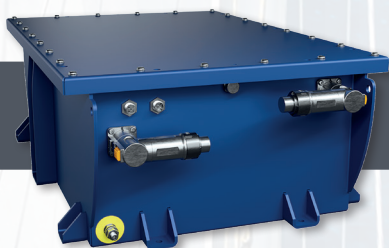
- Power 12– 17 kW
- Voltage 48 – 800 VDC
- Ultra kompact
- Light weight, under 110 kg
- Variable speed
- With or without sound enclosure
- Fast fix fire extinguish hole
- Customisable air intake and exhaust openings.





## NMC BATTERY – “FOR 100 V PROPULSION”

- Battery chemistry: NMC
- Nominal voltage (V): 103 V
- Nominal capacity @ 25 °C: 177 Ah
- Nominal energy @ 25 °C: 18.2 kWh
- Body material: Aluminum
- Protection class: IP65
- Cycle life @ 80% DoD: 2600
- Weight: 95 Kg
- Scalable: Parallel and series



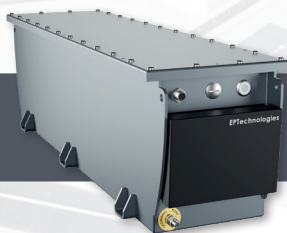
## LFP SOLID STATE BATTERY – “FOR 48 V AND 100V PROPULSION”

- Battery Chemistry: LFP Solid state
  - Nominal Voltage (V): 51,2 V
  - Nominal capacity @ 25 °C: 280 Ah
  - Nominal energy @ 25 °C: 14.33 kWh
  - Body material: Aluminum
  - Top lock lid material: Stainless Steel
  - Protection class: IP65
  - Cycle life @ 80% DoD: 8000
  - Weight: 108 Kg
  - Scalable: Parallel and series
- Can be connected series for using 103 VDC



## LOW VOLT SOLD STATE BATTERY– “FOR 48 V PROPULSION”

- Battery chemistry: LFP
- Nominal voltage (V): 51,6 V
- Nominal capacity @ 25 °C: 280 Ah
- Nominal energy @ 25 °C: 14.33 kWh
- Body material: Aluminum
- Top lock lid material: Stainless Steel
- Protection class: IP65
- Cycle life @ 80% DoD: 10000
- Weight: 108 Kg
- Scalable: Parallel only



## LOW VOLT SOLD STATE BATTERY – “FOR HOUSE”

- Battery chemistry: LFP
- Nominal voltage (V): 25,6 V
- Nominal capacity @ 25 °C: 280 Ah
- Nominal energy @ 25 °C: 7.16 kWh
- Body material: Aluminum
- Top lock lid material: Stainless Steel
- Protection class: IP65
- Cycle life @ 80% DoD: 10000
- Weight: 54 Kg
- Scalable: Parallel only



## GERMANY

### **EP Technologies GmbH**

Senefelder Ring 51  
21465 Reinbek  
Germany  
Sales: +45 30 209 694  
[sales@epttechnologies.de](mailto:sales@epttechnologies.de)  
[www.epttechnologies.de](http://www.epttechnologies.de)

## DENMARK

### **EP Technologies Aps**

Jyllandsgade 17  
6400 Sønderborg  
Denmark  
Sales: +45 30 209 694  
[sales@epttechnologies.dk](mailto:sales@epttechnologies.dk)  
[www.epttechnologies.dk](http://www.epttechnologies.dk)



The copyright for published objects created by the author himself remains solely with the author of the pages. Any duplication or use of such graphics, sound documents, video sequences and texts in other electronic or printed publications is not permitted without the express consent of the author.

© EP Technologies GmbH 2025 6.25